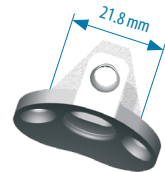
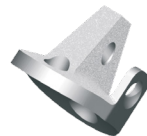
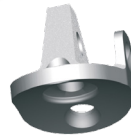


### Size 44

*Standard*  
*Metal-back glenoid base size 44*  
*Cementless*  
*Reference: 260 552*

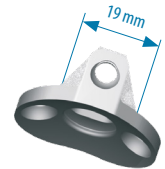
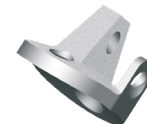
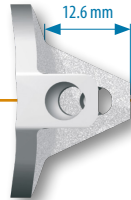


## METAL-BACK GLENOID BASE

Size 44 short keel and Size 44 long keel

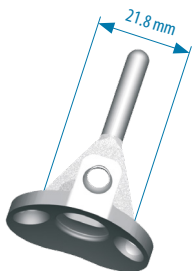
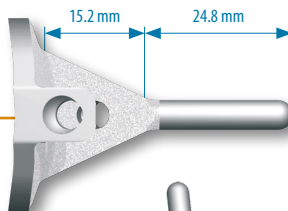
### Size 44 short keel

*Cementless*  
*For medialize glenoid*  
*Reference: 264 098*



### Size 44 long keel

*Cementless*  
*Primary in case of porotic bone and for glenoid revision/reconstruction with bone loosening on circumference (supported by native bone)*  
*Reference: 264 099*



ARROW® "Metal-back glenoid base 44 short keel and 44 long keel" implants are optional.

Those implants can only be used for cementless indications

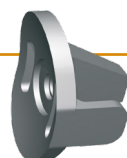
## SPECIFIC INSTRUMENTATION

Complete instrumentation can be found on ARROW® instrument set

### Size 44 short keel

*Metal-back glenoid base size 44 short keel*

Reference: 264 098



*Trial base size 44 short keel*  
Reference: 264 101

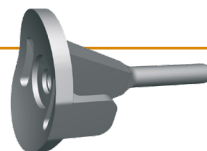


*Cutting block size 44 short keel*  
Reference: 264 100

### Size 44 long keel

*Metal-back glenoid base size 44 long keel*

Reference: 264 099



*Trial revision base*  
Reference: 264 951



*Stopped drill bit Ø5mm for glenoid base size 44 long keel*  
Reference: 264 102